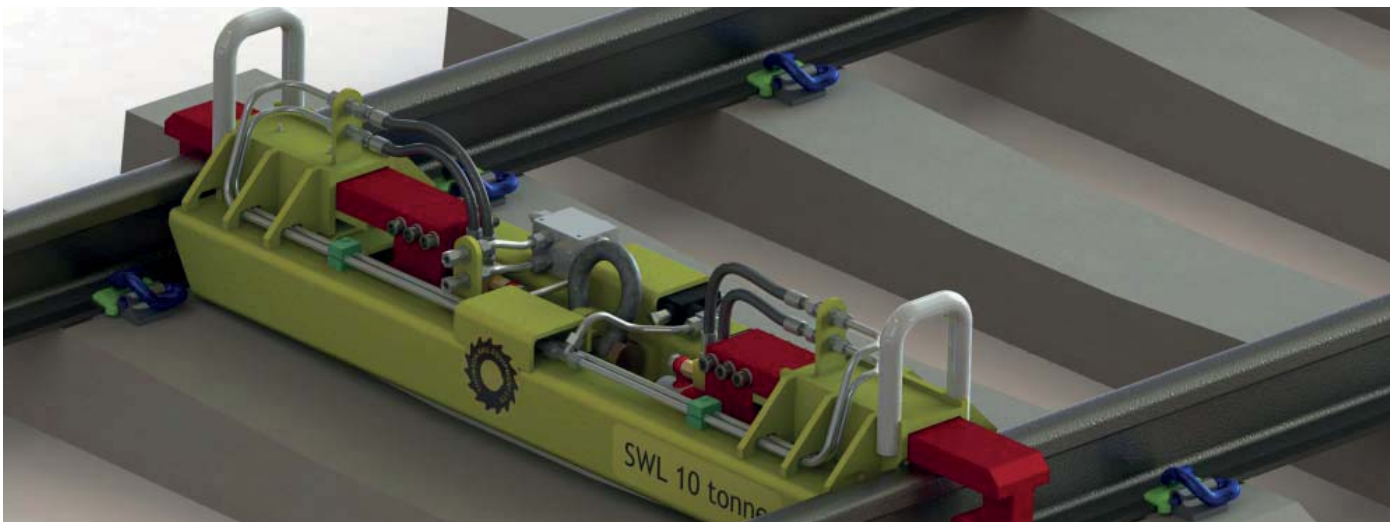


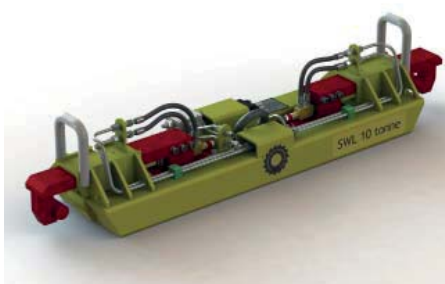
3.2 LH11 LOW HEADROOM PANEL BEAMS



Where track panels have to be recovered and stacked under live overhead equipment, every inch of headroom is vital.

The Thomson Low Headroom Panel Beams have a hitch point just a few millimeters above the level of the rail head, maximising headroom to maximise the number of panels which can be stacked on a wagon in tunnels and under overhead wires.

With a Safe Working Load of 10 tonnes, load sensing safety valves and check valves on both cylinders these beams are the safe answer to panel handling in low-headroom situations.



FEATURES

- Strong and Robust
- Fully protected hydraulic cylinders
- Shielded pipework to prevent damage
- All Steel Welded Construction
- High Resistance to Dynamic Loads
- High Resistance to Abuse
- 10,000 kg WLL
- 20,000 kg Proof Load
- Full Factory Parts Backup
- CE Marked

A LOW HEADROOM DESIGN TO GIVE EXTRA CAPACITY UNDER OLE.

SPECIFICATIONS

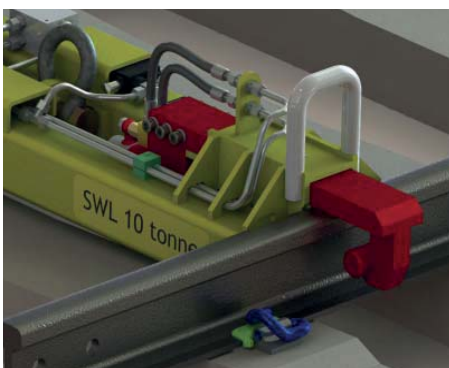
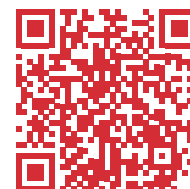
Weight	400 kg
WLL (Safe Working Load)	10,000 kg
Proof Load (Factory test)	20,000 kg
Mechanism	Sliding Jaw

O/A Height	400 mm
O/A Width	360mm
O/A Length	1630 mm

Max. Hyd. Pressure	210 Bar
Min. Hyd. Pressure	90 Bar
Body Colour	08E51 Yellow
Moving Parts	Signal Red
Handles	White

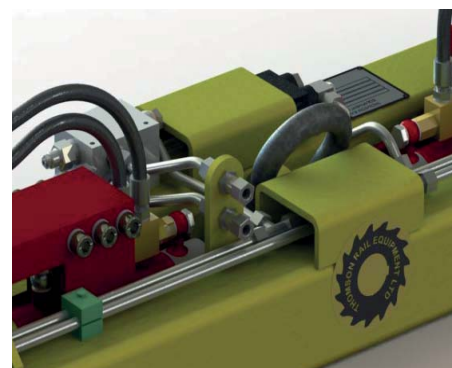
DOCUMENTATION

Operator's Manual
Parts Manual
Maintenance Plan
LOLER Test Certificate



BENEFITS

- Easier working under OLE
- Fail-safe operation
- High strength to withstand the heavy duty use associated with modern RRV's



OPTIONS AND ORDERING INFORMATION

The LH11 Low Headroom Panel Beam is available in two models: for standard gauge and broad gauge track.

This beam is only available with a type 01 adapter (fixed head for swivel hook) which is fitted as standard.

A transport / storage stillage is available for this product.



Example: LH11-01-01 Panel Beam for standard gauge track with no stillage

PRODUCT ACCEPTANCE

This product has been designed for underground applications
No application has been made for Network Rail Product Acceptance

MODEL NUMBERS FOR ORDERING

When ordering this product please use the ordering code below to specify the correct options

LH11-□□-□□

Beam Type	Code
Standard Gauge	01
1600mm Broad Gauge	02

Stillage	Code
No Stillage	01
With Transport / Storage Stillage	02