

# 1.1 RSR11 RAIL STORAGE RACKS



Safely stacking rails, particularly bullhead section rail, is a simple matter with Thomson Rail Storage Racks.

The system consists of two rack types: the Base Rack rests on the ground and carries the first layer of rails, the Layer Rack allows further layers to be stacked on top.

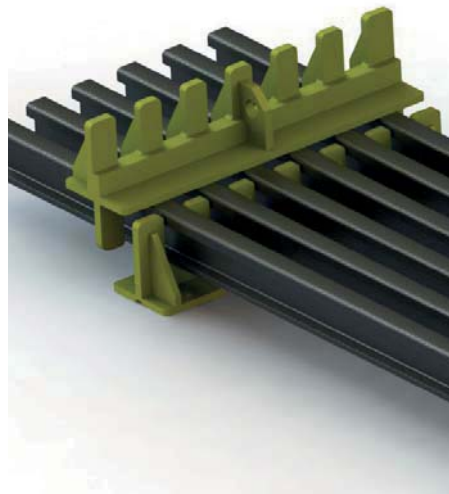
The maximum height of a stack of rails depends upon the ground conditions but, as well as maximising space, our Rail Storage Racks provide a neat, safe solution.

Racks are available for all rail types including conductor rail and can be made to carry up to 15 rails per layer.

## SPECIFICATIONS

Weight (Bullhead Base 6-rail) 25 kg  
 Weight\*(Bullhead Layer 6-rail) 24.5 kg  
 Max. Stack height depends on ground conditions.

\*All layer racks fitted with central lifting point



## FEATURES

- Lightweight & Compact
- Neat & Tidy Solution
- 6-Rail Racks manually handleable
- Racks available for any width
- Racks available for all rail types
- High Strength
- All Steel Construction
- Rails held at suitable spacing for grab handling
- High Resistance to abuse
- Powder coated or galvanized finish
- CE Marked

A ROBUST, SAFE AND SECURE SYSTEM FOR STACKING AND STORING RAIL SECTIONS

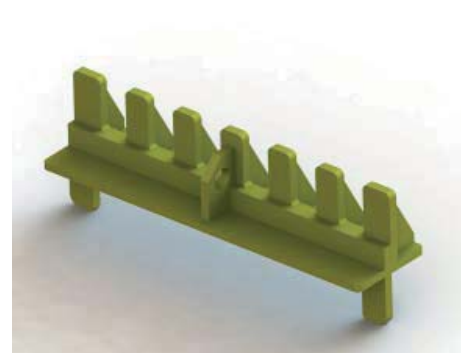
## DOCUMENTATION

- User Manual
- Installation Drawing
- Factory Inspection Certificate



## BENEFITS

- Simple and Safe
- Compatible with Thomson Rail Handling Devices
- Space Saving



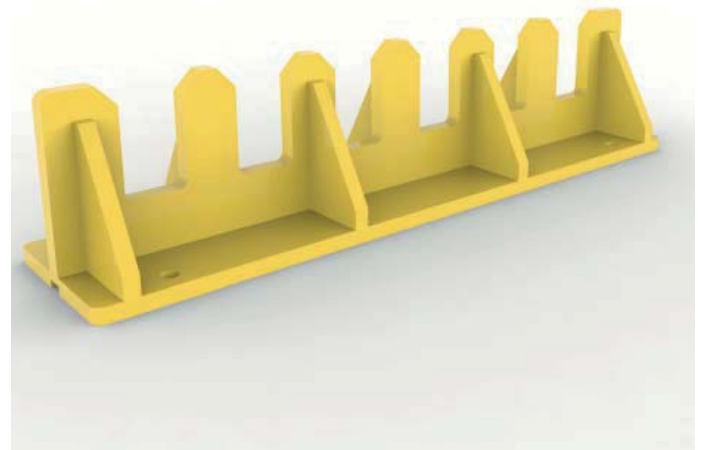
Specifications given may be subject to change due to our policy of continuous improvement

# OPTIONS AND ORDERING INFORMATION

Thomson RSR11 Rail Storage Racks can be made to suit almost any number of rails and to suit either bullhead or flat bottom rail types.

The Base Rack has anchor bolt holes for M16 bolts (number and location vary with rack size).

Racks are supplied with a design conformity certificate.



Example: RSR11-01-06 Base Rack for 6 bullhead rails

## PRODUCT ACCEPTANCE

Rail Storage Racks are not intended for use on Network Rail infrastructure and no application has been made for Product Acceptance

# MODEL NUMBERS FOR ORDERING

When ordering a Rail Storage Rack the order code specifies the various options.

# RSR11-□□-□□

Rack Type	Code
<i>Bullhead Rail Base</i>	01
<i>Bullhead Rail Layer</i>	02
<i>Flat Bottom Rail Base</i>	03
<i>Flat Bottom Rail Layer</i>	04

No of Rails per Layer	Code
<i>1 rail</i>	01
<i>2 rails</i>	02

**Max 15**