

1.6 RT211 CUTTLFISH RAIL TURNER



The RT211 Rail Turner from Thomson Engineering is our most versatile rail handling product.

Robustly constructed and with hydraulic protection through a twin pilot-operated check valve mounted directly on the cylinder this grab is easy and safe to use.

All joints are fitted with replaceable bushes and grease nipples for daily lubrication.

The unique feature of the RT211 is its ability to grab, manipulate and turn rails up to 200m in length. This makes it ideal for rail handling and rail recovery operations.



FEATURES

- Hydraulic Rotation
- Hydraulic Rail Jaws
- Hydraulic Jaw Tilt
- All Steel Construction
- High Resistance to Dynamic Loads
- High Resistance to Abuse
- Can work in any position
- 2,000 kg WLL
- 4,000 kg Proof Load
- Can grab rail from any angle
- Full Factory Parts Backup
- CE Marked

THE MOST VERSATILE AND USEFUL RAIL MANIPULATOR ON THE MARKET TODAY

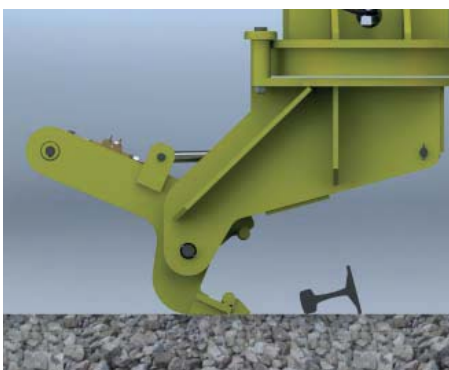
SPECIFICATIONS

Weight approx.	650 kg
WLL (Safe Working Load)	2,000 kg
Proof Load (Factory test)	4,000 kg
Mechanism	Fully Hydraulic
Min. Grip Force	40 kN
Min. Rotation Moment	9,500 kNm
O/A Width	140 mm
O/A Length	230 mm

Max. Hyd. Pressure	210 Bar
Min. Hyd. Pressure	90 Bar
Rotator Max Hyd. press.	150 Bar
Body Colour	08E51 Yellow
Jaw and cylinder	Signal Red

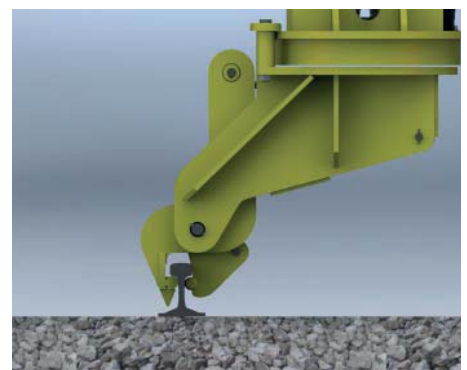
DOCUMENTATION

- Operator's Manual
- Parts Manual
- Maintenance Plan
- LOLER Test Certificate
- PADS No. 094/011081



BENEFITS

- Recover rails of any length from anywhere
- Copes easily with overturned rails
- No need for manual handling or rolling of rails



Specifications given may be subject to change due to our policy of continuous improvement

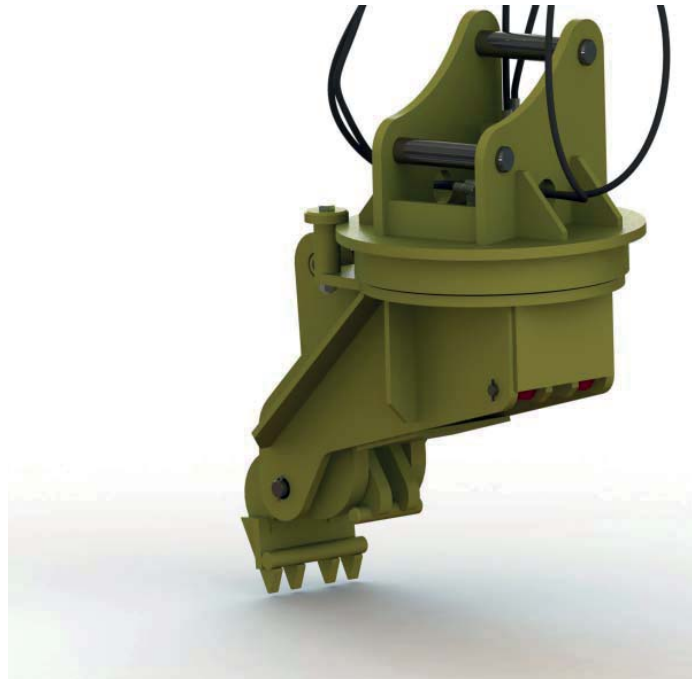
OPTIONS AND ORDERING INFORMATION

The RT211 Cuttlefish Rail Turner is available with or without pressure control valves on the grab and tip hydraulic systems.

Pressure control should be specified where the host machine system pressure exceeds 210 Bar.

When ordering we will need to know the required dimensions for the adapter head. Adapter heads are available with fixed pins for quick couplers or with removable pins for direct coupling to the excavator boom.

A transport / storage stillage is available for this product.



Example: RT211-01-01 Rail Turner with no pressure control valve or stillage

PRODUCT ACCEPTANCE

This product has full Network Rail Product Acceptance under Certificate number 05/05230

MODEL NUMBERS FOR ORDERING

When ordering this product please use the ordering code below to specify the correct options

RT211-□□-□□

Pressure Control	Code
No Pressure Control Valve	01
With Pressure Control	02

Stillage	Code
No Stillage	01
With Transport / Storage Stillage	02

NOTE

When ordering we will need to know the dimensions of your host machine in order to manufacture the adapter head.

Please see Section 10 for details of the dimensions we require for a Type 04 head