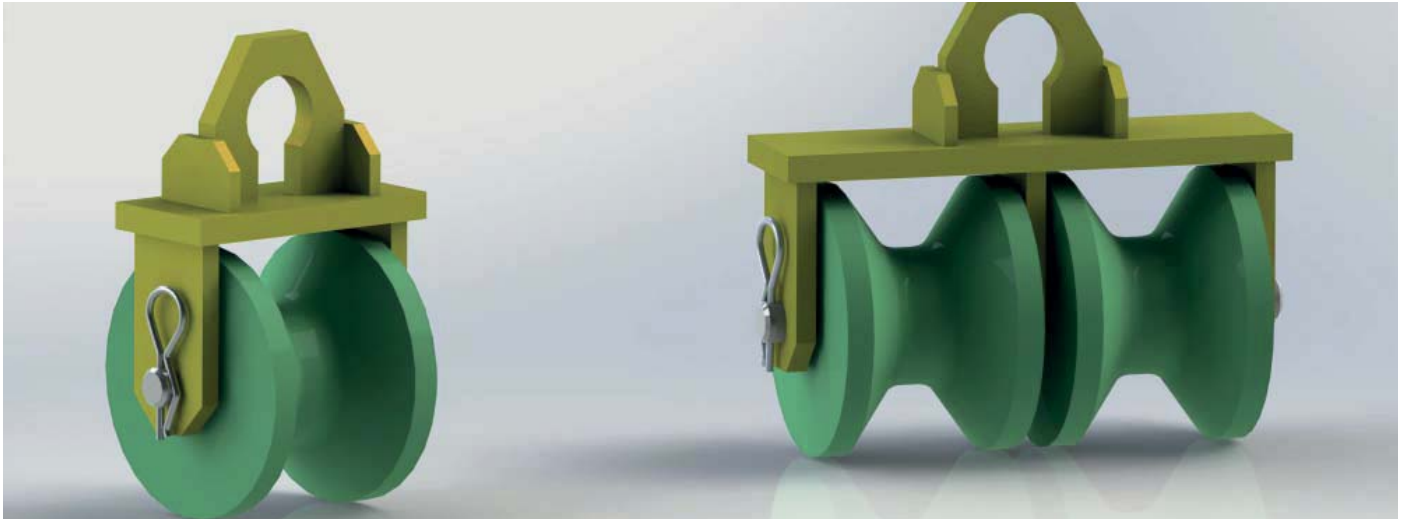


# 7.4 CT06 CABLE THIMBLES



Thomson Cable Thimbles are designed to be suspended from the lifting hook of an excavator crane to guide the cable off the drum.

A soft polyurethane roller running on low friction bearings ensures that the cable is carefully handled.

To disconnect the thimble without cutting the cable the roller can be easily removed from the frame.

Single, twin and multiple roller versions are available to order.



### FEATURES

- Strong and Light
- Designed to protect cable
- Soft urethane rollers
- 30 kg WLL
- 45 kg Proof Load
- Full Factory Parts Backup
- CE Marked

A SIMPLE WAY TO REDUCE THE HARD WORK OF CABLE INSTALLATION

## SPECIFICATIONS

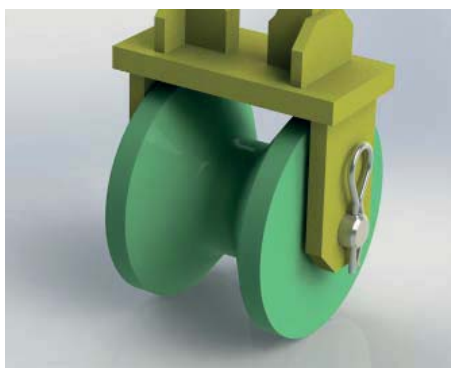
Weight (Single)	11 kg
Weight (Twin)	14 kg
WLL (Safe Working Load /cable)	30 kg
Proof Load (Factory Test)	45 kg

## APPLICATIONS

- Signal Cables
- Optical Fibre Cables
- Power Cables

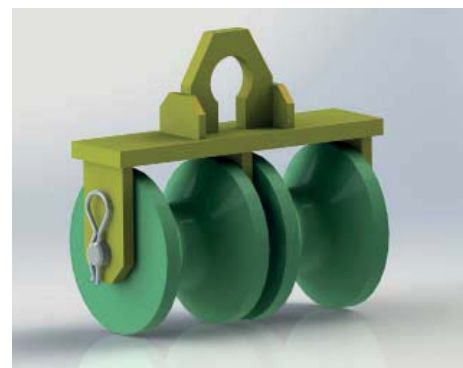
## DOCUMENTATION

- Operator's / Maintenance Manual
- LOLER Test Certificate



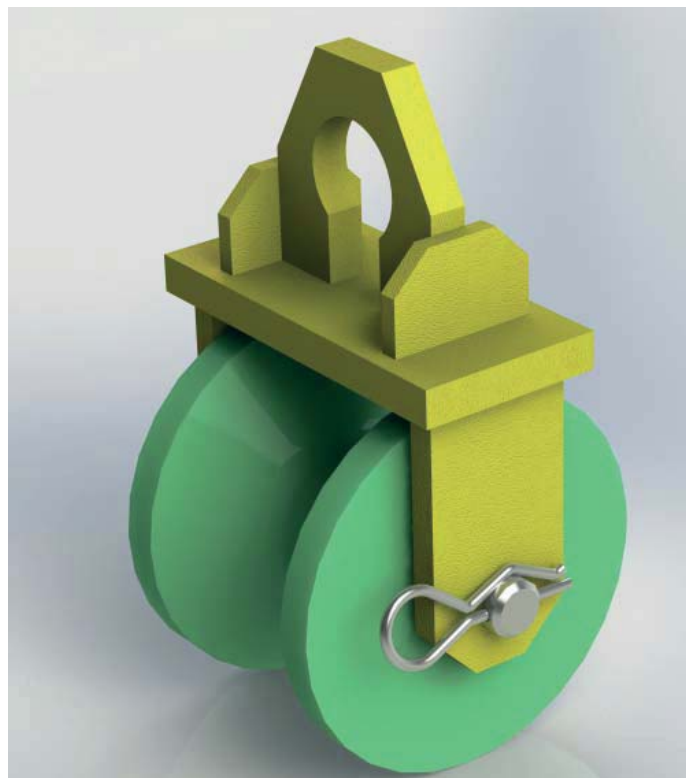
### BENEFITS

- Fully certificated and tested
- Simple to use
- Light weight
- Low rolling resistance



# OPTIONS AND ORDERING INFORMATION

The CT06 Cable Thimble is available in single reel and twin reel versions.



Example: CT06-01 Single Cable Reel

## PRODUCT ACCEPTANCE

This product is loose lifting tackle and Product Acceptance is not therefore required

# MODEL NUMBERS FOR ORDERING

When ordering this product please use the ordering code below to specify the correct options

# CT06-□□

Type	Code
<i>Single Reel</i>	01
<i>Twin Reel</i>	02
<i>Multiple Reels</i>	03

## NOTE

When ordering Cable Thimbles with multiple reels please state the number of reels required