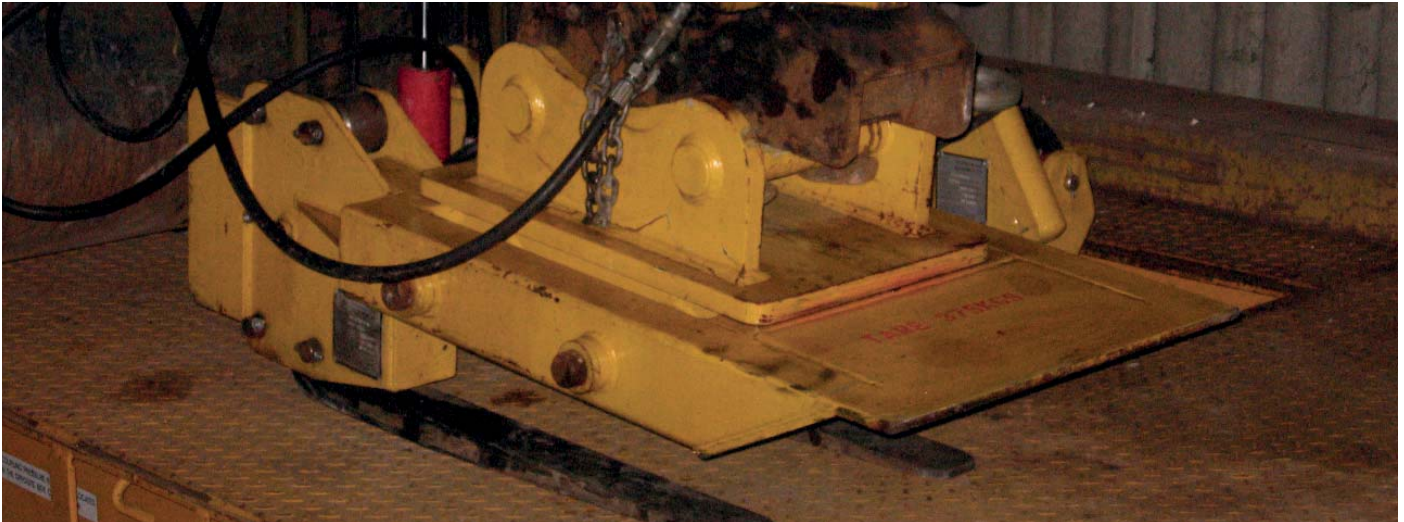


6.9 CSL16 CROSSING SLAB LIFTER



The Thomson Crossing Slab Lifter is designed for the rapid removal and replacement of rubber block level crossings.

The forks hydraulically clamp the crossing slab into the device so that slabs can be stacked on edge and retrieved easily.

When replacing crossing slabs the side and front blades are used to press the slabs firmly into position.

One operator with two men to release the tie rods can remove a two lane crossing entirely in around thirty minutes.



FEATURES

- Strong and Robust
- Fully protected hydraulic cylinders
- Bronze bushes in jaw rollers
- All Steel Welded Construction
- Forged forks
- High Resistance to Dynamic Loads
- High Resistance to Abuse
- Proven in Use Since 2005
- 3,000 kg WLL
- 6,000 kg Proof Load
- Full Factory Parts Backup
- CE Marked

A SAFE AND QUICK WAY TO REMOVE AND INSTALL LEVEL CROSSING SLABS MINIMISING LABOUR AND MAXIMISING SAFETY

SPECIFICATIONS

Weight (Grab Only)	400 kg	Max. Hyd. Pressure	210 Bar
Pad Coating	Polyurethane	Min. Hyd. Pressure	120 Bar
Range of Grip	90 to 300mm diam.	Body Colour	08E51 Yellow
WLL (Safe Working Load)	3,000 kg	Moving Parts	Signal Red
Proof Load (Factory Test)	6,000 kg		

DOCUMENTATION

Operator's Manual
Parts Manual
Maintenance Plan
LOLER Test Certificate
PADS No, 094/012065



BENEFITS

- High dexterity for accurate and precise placement
- Small size to maximise applications
- Press blades for installing crossings



Specifications given may be subject to change due to our policy of continuous improvement

OPTIONS AND ORDERING INFORMATION

The CSL16 Crossing Slab Lifter is available with a fixed 2-pin head, a rotator and fixed 2-pin head or with a rotator and tilting 2-pin head.

The tilting head tilts to 30 degrees in either direction.

The design incorporates blades on the front and rear of the device for pressing the slabs into place between the rails.

A pressure control valve is fitted as standard.

A transport / storage stillage is available for this product.



PRODUCT ACCEPTANCE

This product has full Network Rail Product Acceptance under Certificate number 05/04271

Example: CSL16-01-01 Crossing Slab Lifter with fixed head and no stillage

MODEL NUMBERS FOR ORDERING

When ordering this product please use the ordering code below to specify the correct options

CSL16-□□-□□

Grab Type	Code
<i>Fixed Head</i>	01
<i>Rotator and Fixed Head</i>	02
<i>Rotator and Tilting Head</i>	03

Stillage	Code
<i>No Stillage</i>	01
<i>With Transport / Storage Stillage</i>	02

NOTE

When ordering this product we will need to know the dimensions specified in Section 10 for a Type 04 adapter