

2.2 SM12 SLEEPER MANIPULATOR



The Thomson Sleeper Manipulator is designed for the precision handling and placement of steel, concrete and timber sleepers.

Interchangeable jaw pads are supplied: urethane lined for concrete, patterned for timber and with base bar for steel sleepers.

Jaws open to 400mm and close to 200mm to accommodate all sleeper types and the 500 kg Safe Working Load allows this grab to handle even the longest bearers.

Pressure control, fitted as standard, prevents overloading of the grab mechanism.



FEATURES

- Rotating or interchangeable jaws for steel, concrete and timber sleepers
- Urethane pads for concrete sleepers eliminate damage
- Hydraulic rotator
- Two pin mounting to host machine
- Heavy duty construction
- Twin jaw cylinders with check valves
- 500 kg WLL
- 1,000 kg Proof Load
- Full Factory Parts Backup
- CE Marked

AN IDEAL SOLUTION FOR PRECISION SLEEPER HANDLING AND FOR SLEEPER CHANGING.

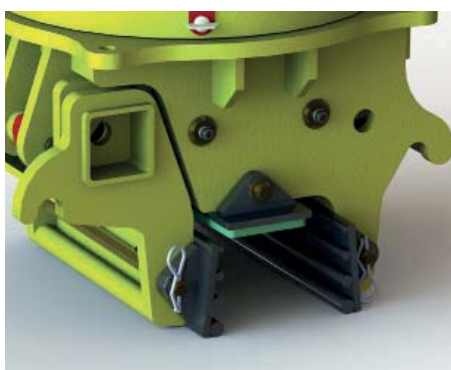
SPECIFICATIONS

Weight	635 kg
WLL (Safe Working Load)	500 kg
Proof Load (Factory test)	1,000 kg
Mechanism	Hydraulic
Jaw Range	200 - 400mm
O/A Height	1075 mm
O/A Width	700 mm
O/A Length	825 mm

Max. Hyd. Pressure	210 Bar
Min. Hyd. Pressure	90 Bar
Grip Force (@200 Bar)	74,600 N
Body Colour	08E51 Yellow
Cylinder Colour	Red

DOCUMENTATION

- Operator's Manual
- Parts Manual
- Maintenance Plan
- LOLER Test Certificate



BENEFITS

- Narrow profile for ease of access to clips / chairs
- Fully enclosed mechanism means reduced damage
- Hydraulic rotation and 2 pin mounting mean precise sleeper positioning and manipulation



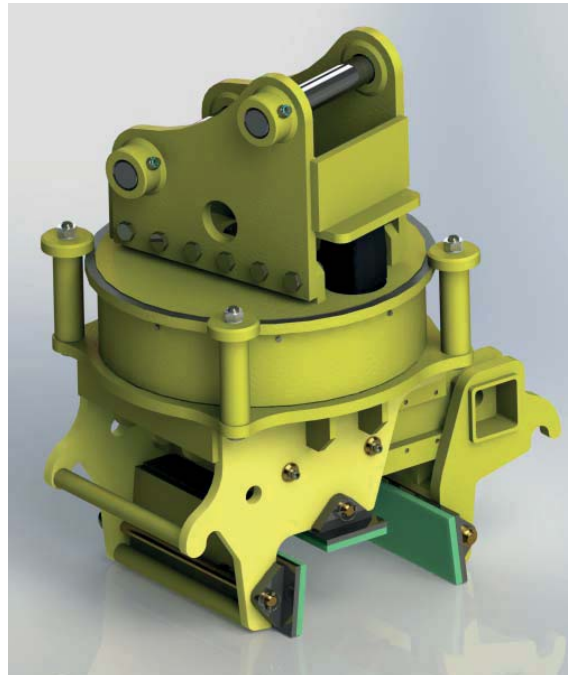
Specifications given may be subject to change due to our policy of continuous improvement

OPTIONS AND ORDERING INFORMATION

The SM12 Sleeper Manipulator is supplied with a two pin head for fitting to an excavator.

When ordering please specify the adapter head dimensions to suit your host machine.

A transport / storage stillage is available for this product.



Example: SM12-01 Sleeper Manipulator without stillage.

PRODUCT ACCEPTANCE

This product has been developed primarily for overseas markets and has not to date been presented for Network Rail Product Approval

MODEL NUMBERS FOR ORDERING

When ordering this product please use the ordering code below to specify the correct options

SM12-□□

Stillage	Code
<i>No Stillage</i>	01
<i>With Transport / Storage Stillage</i>	02

NOTE

When ordering we will need to know the dimensions of your host machine in order for us to provide the correct adapter head

Please see Section 10 for details of the dimensions we require for Type 04 adapter head.