

# INSTANT BARRIER SYSTEM

## Brochure



### Key Elements and Features of the Thomson Engineering Design Instant Barrier System

Issue 1

April 2017



# Introduction

*The Thomson Instant Barrier Post is fully approved by Network Rail and London Underground for the demarcation of safe working zones in rail environments.*

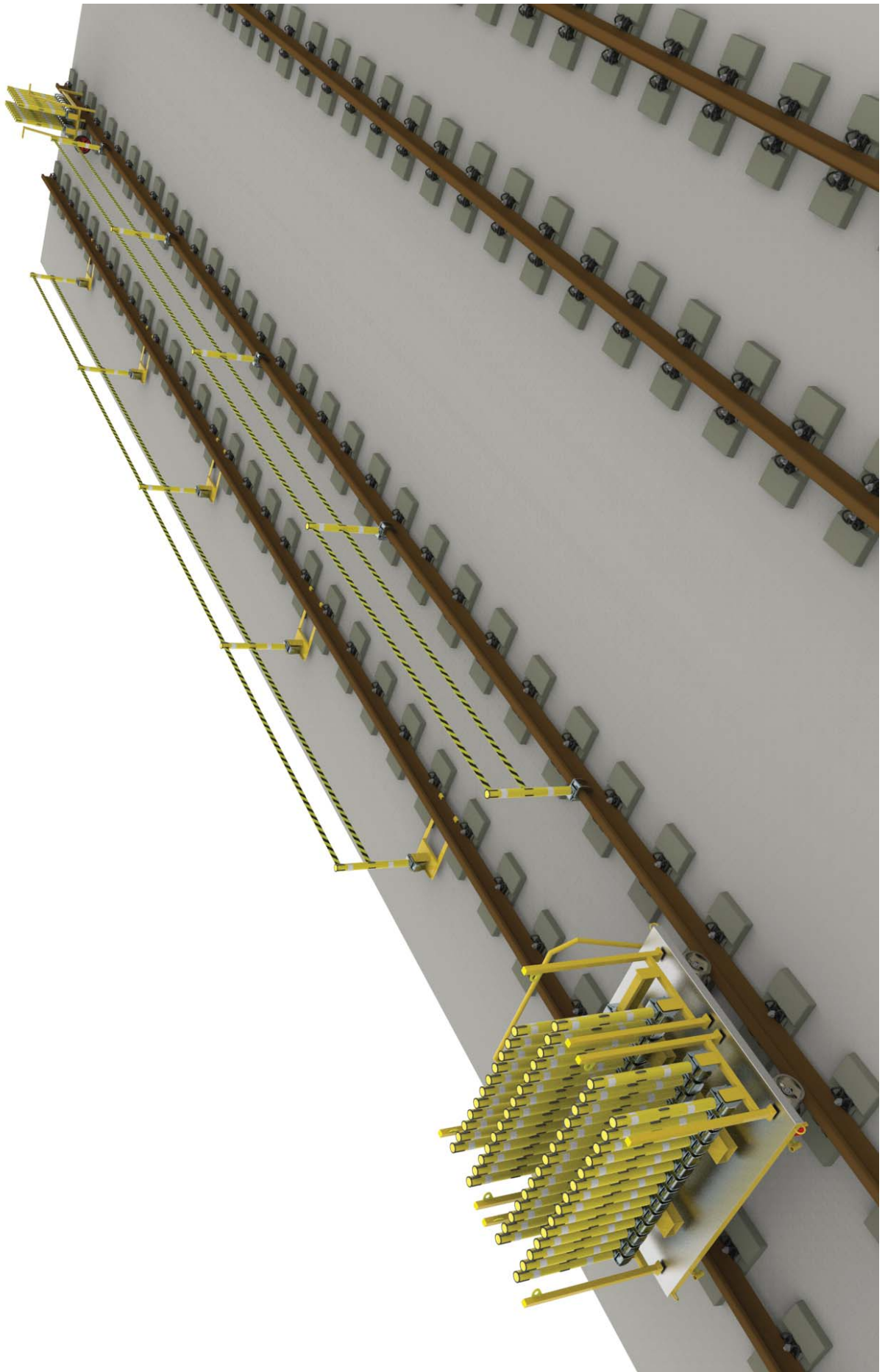
The post system uses a unique cam-action clamp to lock to the head of running rails (BS113A, CEN60 or 95lb Bullhead) to provide a clear visual indication of the limits of a safe walking route or work site.

This can significantly reduce risks to personnel and is an alternative to using a site warden in many cases.

The pull-out tapes are spring loaded so that posts can be deployed along the rail, between rails, over S+C, etc. without gaps or extended poles.







# Barrier Posts

*Thomson Instant Barrier Posts provide a rapid solution to the demarcation of safe working areas within the rail environment.*

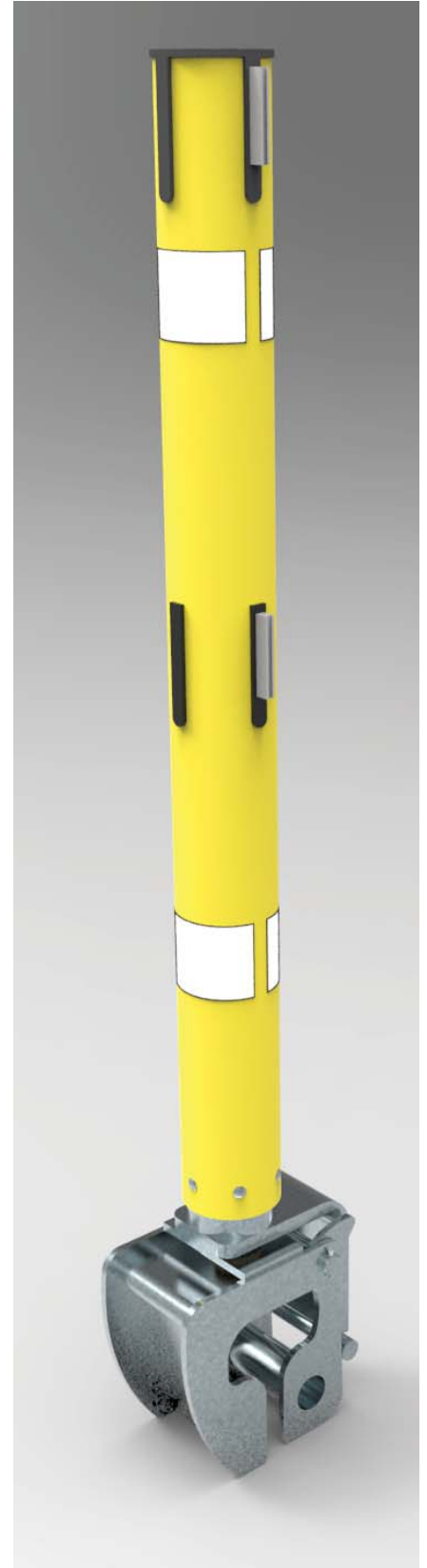
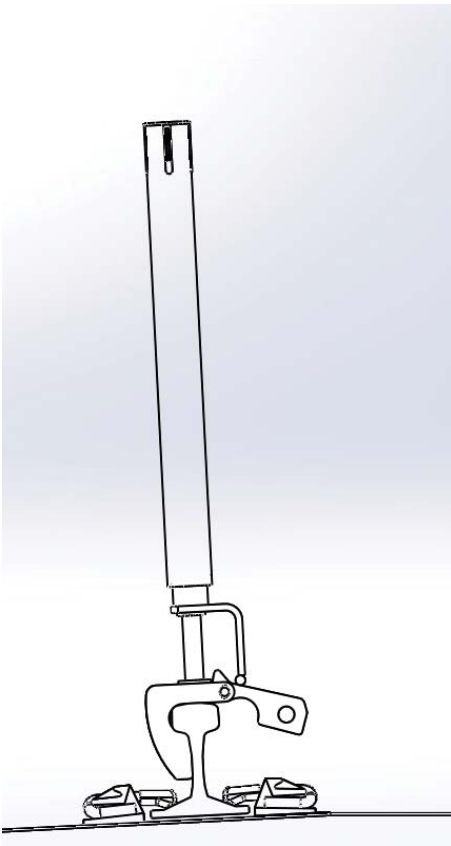
Posts clip to the head of running rails as they are lowered and the spring loaded tapes link posts in seconds to form a clear visual barrier around a safe working area.

Because it takes just a few minutes to set up a working zone and because it is just as easy to pack away afterwards there is no need for extra track possessions just to install the barrier: it is simply set up and removed as part of the works.

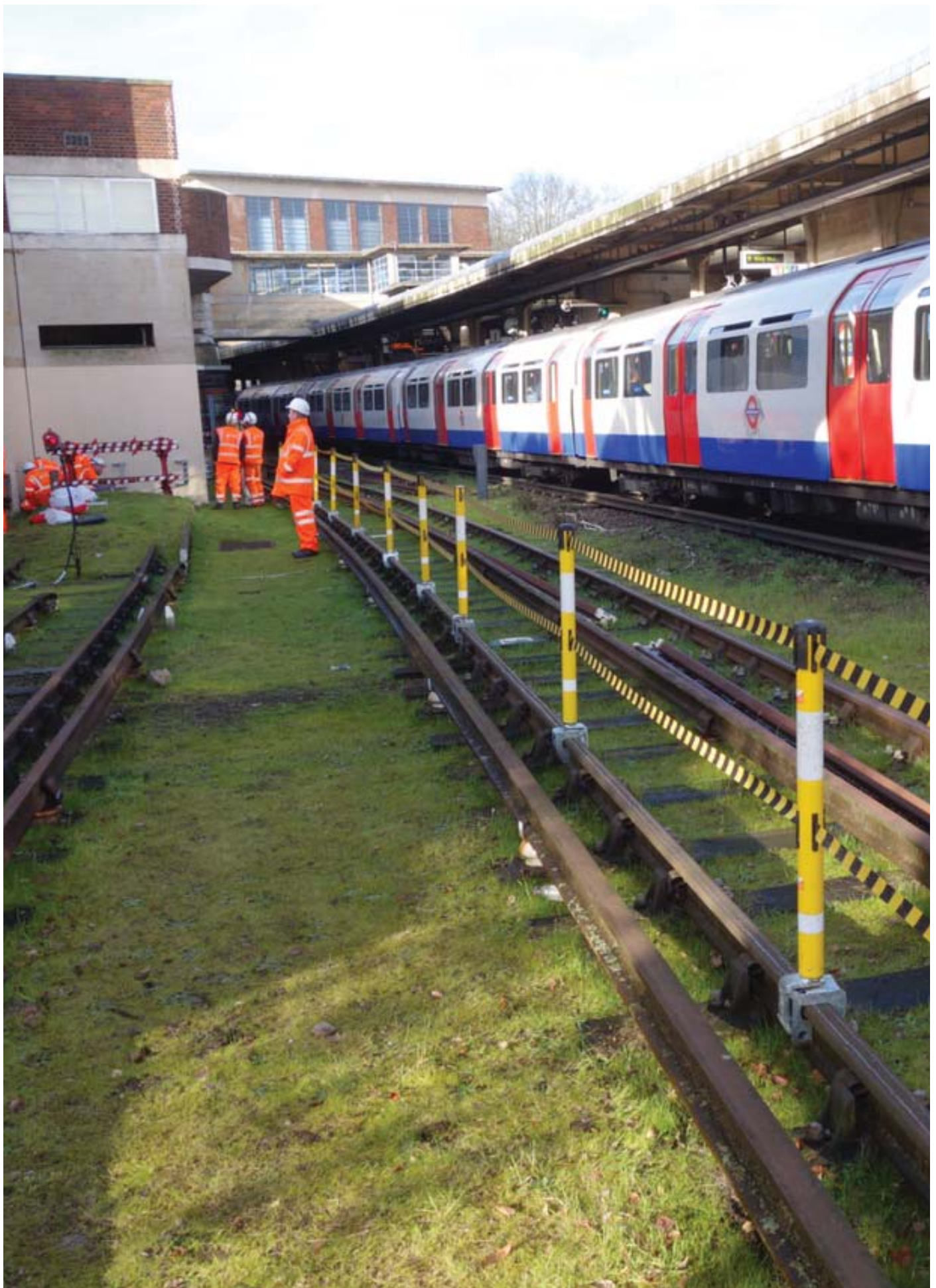
Typically 100m of barrier can be set up by two men in around five minutes using a trolley system (see later pages).

The Thomson Instant Barrier System is also available with a number of accessories including offset bases, trolleys and stillages.

A lamp is also available for fitting to the top of the post where increased visual warning is required.



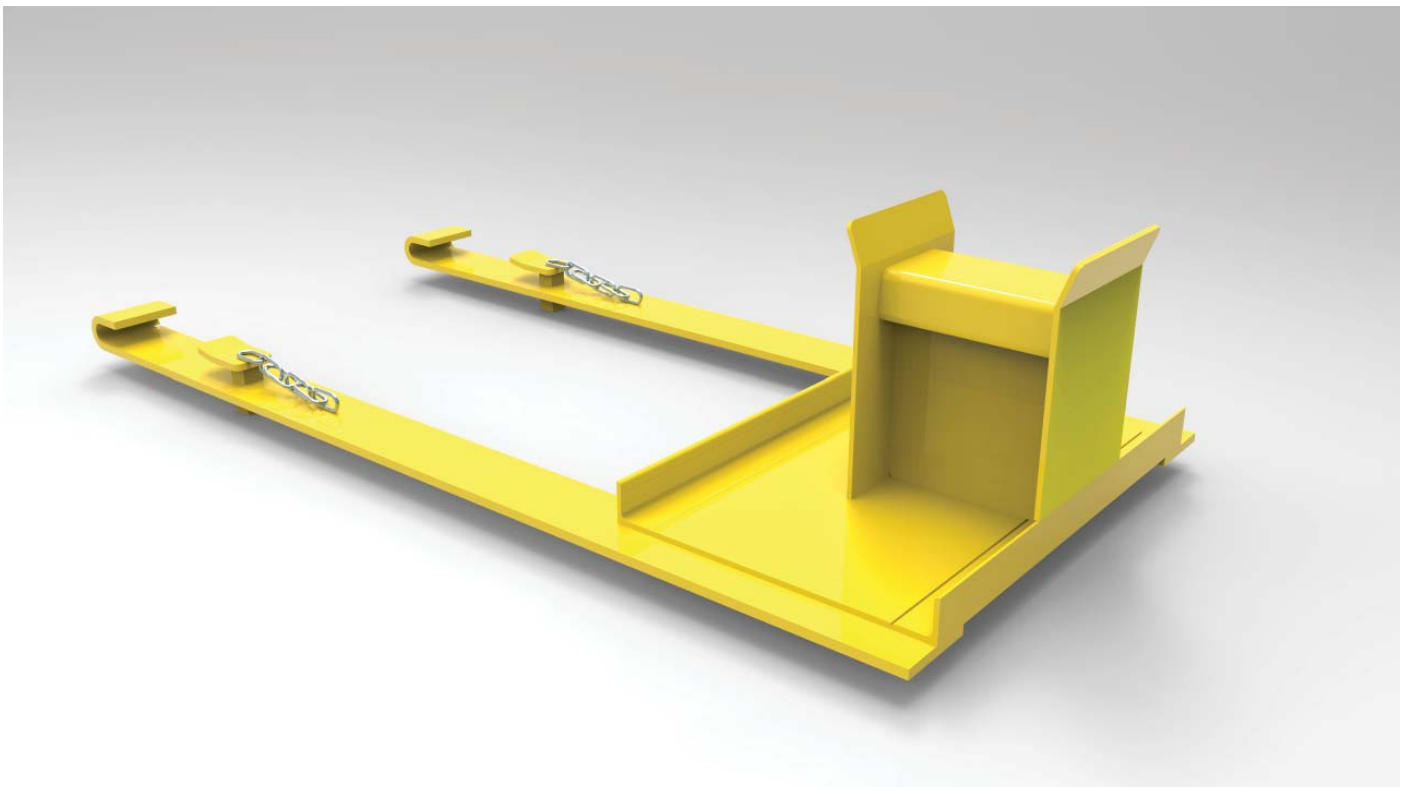




# Offset Base

*On some rail sites it may be necessary to pass Engineers Trains or On-Track Plant along the line and in these circumstances the Offset Base is used to set the barrier posts away from the rail.*

Bases lock onto the foot of the rail (only suitable for flat-bottom rails) and provide a mounting point for the barrier post.







# Transport, Storage and Delivery

*Thomson Instant Barrier posts can be supplied with a stackable stillage which carries 28 posts (100m of barrier) or on a road / rail trolley.*

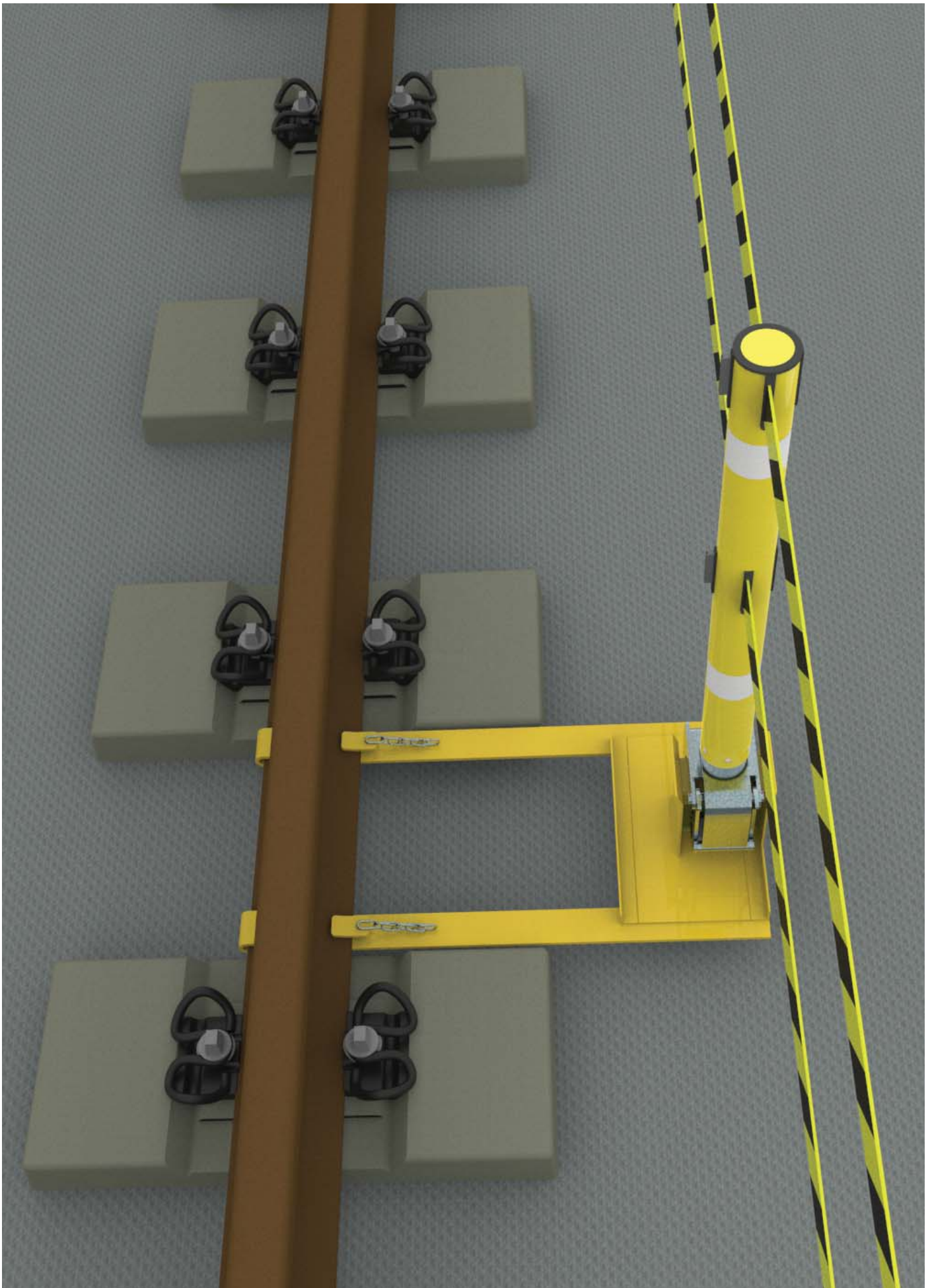
The road / rail trolley carries eighteen barrier posts (64m of barrier). It has handles which can be fitted either at the ends or the side of the frame to use as a sack barrow or as a rail skate.

When not in use stillages of posts may be stacked up to 3 high for efficient use of depot floor space. Trolleys can be parked neatly out of the way until needed again.









# Contact Details

*All technical and sales enquiries should be directed to Thomson Engineering Design.*

**Thomson Engineering Design Ltd  
Valley Road  
Cinderford  
Gloucestershire  
UK  
GL14 2NZ**

**Tel: +44 (0) 1594 82 66 11**

**Fax: +44 (0) 1594 82 55 60**

**Email:     [sales@thomsondesignuk.com](mailto:sales@thomsondesignuk.com)  
              [technical@thomsondesignuk.com](mailto:technical@thomsondesignuk.com)**

## PLEASE NOTE

Whilst every care is taken to ensure that the contents of this document are true and accurate, the specifications of our products and the scope of our services are constantly changing as part of our policy of continuous improvement.

We strongly recommend contacting the factory to ensure that details given are still current.

More than half our business comes from special products designed and built as one-off's and we are always pleased to discuss amended specifications should the product detailed here not meet your exact requirements.



