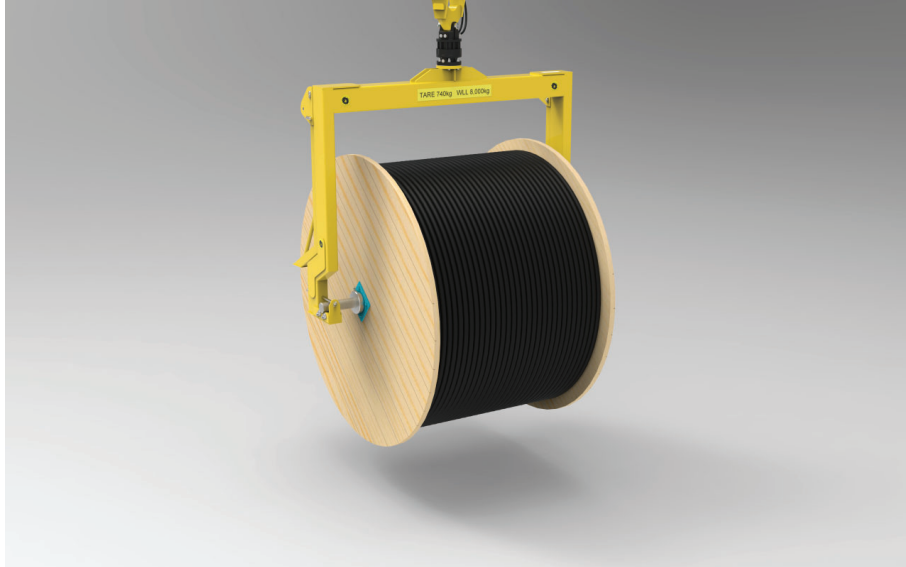


CY20-R-2.5-2.0-8T CABLE YOKE

Specifications



**Specifications for an 8-tonne capacity cable yoke
available in shackle mount and hydraulic rotator
mount versions**

Issue I

September 2020

Contents and Issue Record

Contents and Issue Record	2
Introduction	3
Key Features	4
Specifications	8
Contact Details	9

ISSUE RECORD

First issue	4th September 2020
-------------	--------------------

Introduction



The CY20-R-2.5-2.0-8T Cable Yoke is a heavy-duty cable drum handler designed for the rapid de-coiling of power cables up to 8,000kg drum weight and 2.5m drum diameter.

Building on the success of our smaller models this device incorporates the same simple design and high strength all-steel construction to deliver heavy cables quickly, safely and precisely.

Two versions of the device are available: shackle mounted and rotator mounted. The rotator mounted version is available with a full range of adapter heads to suit all machine types.

Primarily used as excavator attachments, Thomson Cable Yokes all feature drum shafts mounted on free running rollers which makes paying off cable almost effortless and allows these devices to be used for handling delicate cables such as optical fibre.

The removable drum shaft assembly is first installed into the cable drum and the yoke is then used to pick up the shaft and drum and manipulate it into position over the delivery route. The host machine then moves slowly up the site whilst the cable is manually pulled from the drum and guided into place.

Even the heaviest cables can be easily laid into position at walking pace without any heavy manual effort being required.

All parts of the device have been computer designed and analysed to ensure that the finished product is strong and reliable for a long working life.

Thomson Cable Yokes are just one in a family of cable transport, handling and delivery products. Please visit our website **www.thomsonrail.com** for further details.

Key Features

The drum shaft rests on maintenance free, low friction rollers to make drawing cable as easy as possible. The shaft is safely locked in place by a cross pin at each end.

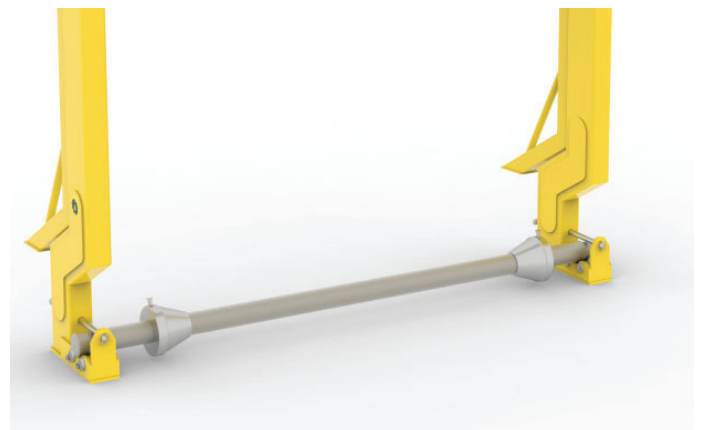


Attachment to the host machine can be by a simple shackle mount or via the optional hydraulic rotator.

When the rotator is specified a full range of adapter heads is available to fit any machine type.



Conical adapters are fitted to the drum shaft. These clamp to the shaft to secure the drum on-centre.



Built-in transport stands allow the device to be easily transported on small trucks or to be shipped inside a standard container.

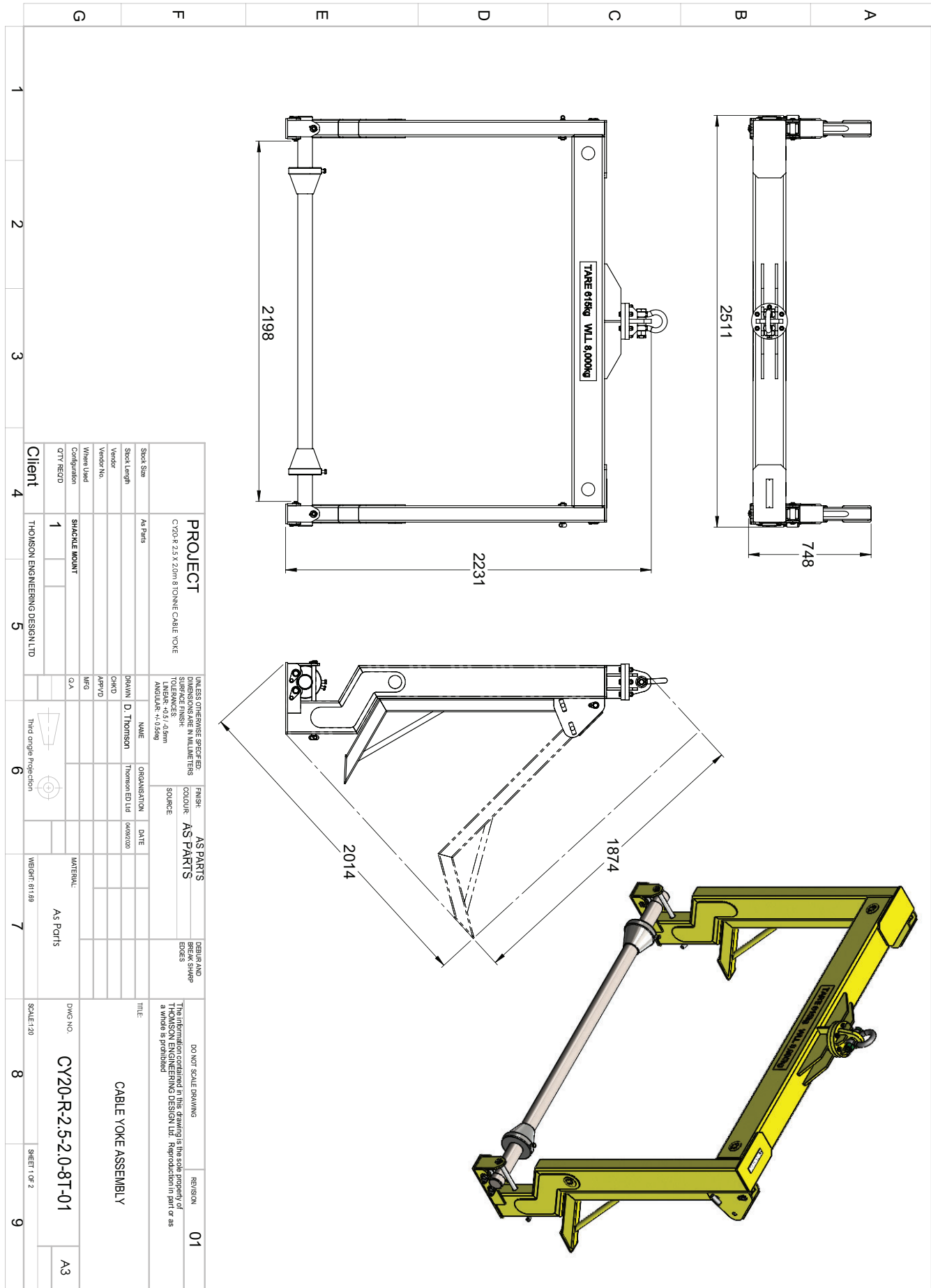


Each device is individually load tested prior to despatch and bears a unique serial number.

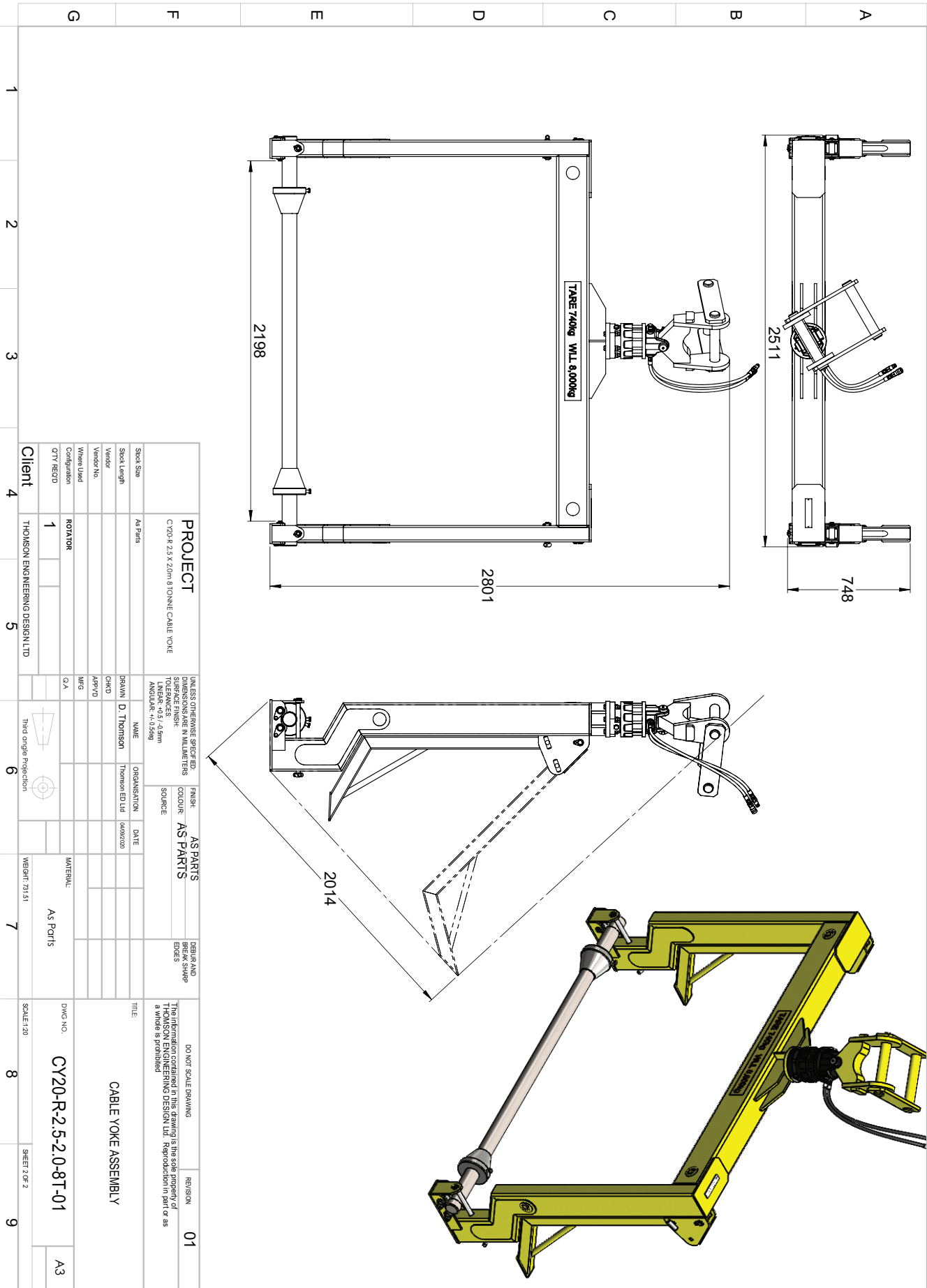


The device can handle cable drums up to 2.5m diameter x 2m wide and weighing up to 8,000kg.





PROJECT										UNLESS OTHERWISE SPECIFIED:										FINISH										AS PARTS										AS PARTS										DO NOT SCALE DRAWING										REVISION										01																																																											
CY20-R 2.5 X 2.0m 8 TONNE CABLE YOKE										DIMENSIONS ARE IN MILLIMETERS										COLOUR										AS PARTS										THE INFORMATION CONTAINED IN THIS DRAWING IS THE SOLE PROPERTY OF THOMSON ENGINEERING DESIGN LTD. REPRODUCTION IN PART OR AS A WHOLE IS PROHIBITED																																																																																									
TOLERANCES										SURFACE FINISH										SOURCE																																																																																																													
LINEAR: +0.5 / -0.3mm																																																																																																																																	
ANGULAR: +/- 0.5deg																																																																																																																																	
AS PARTS										NAME										ORGANISATION										DATE																																																																																																			
Sheet Length										DRAWN										D. Thomson										Thomson ED Ltd										04/09/2020																																																																																									
Vendor										CHECKED																																																																																																																							
Vendor No.										APPROVED																																																																																																																							
Wherein Used										MFG																																																																																																																							
Configuration										SHACKLE MOUNT																																																																																																																							
QTY REQD										1																																																																																																																							



Specifications

Tare Weight (shackle mount)	615 kg
Tare Weight (rotator mount) Typical (depends on adapter head type)	740 kg
Working Load Limit	8,000 kg
Drum Shaft Diameter	90 mm
Drum Shaft Weight	125 kg
Cone Weight (each)	18 kg
Drum Shaft Hole Range	90 to 190 mm
Maximum Drum Diameter	2,500 mm
Maximum Drum Width	2,000 mm
Shipping Dimensions (shackle mount) (L x W x H)	2,511 x 2,014 x 1,874 mm
Shipping Dimensions (rotator mount with typ. head) (L x W x H)	2,511 x 2,014 x 2,200 mm
Paint colour (standard)	Yellow
Documentation	Operation and Maintenance Manual
	LOLER test certificate
	Certificate of Conformity (CE / UKCA)

Contact Details

All technical and sales enquiries should be directed to Thomson Engineering Design.

**Thomson Engineering Design Ltd
Valley Road
Cinderford
Gloucestershire
UK
GL14 2NZ**

Tel: +44 (0) 1594 82 66 11

Fax: +44 (0) 1594 82 55 60

**Email: sales@thomsondesignuk.com
 technical@thomsondesignuk.com**

PLEASE NOTE

Whilst every care is taken to ensure that the contents of this document are true and accurate, the specifications of our products and the scope of our services are constantly changing as part of our policy of continuous improvement.

We strongly recommend contacting the factory to ensure that details given are still current.

More than half our business comes from special products designed and built as one-offs and we are always pleased to discuss amended specifications should the product detailed here not meet your exact requirements.

