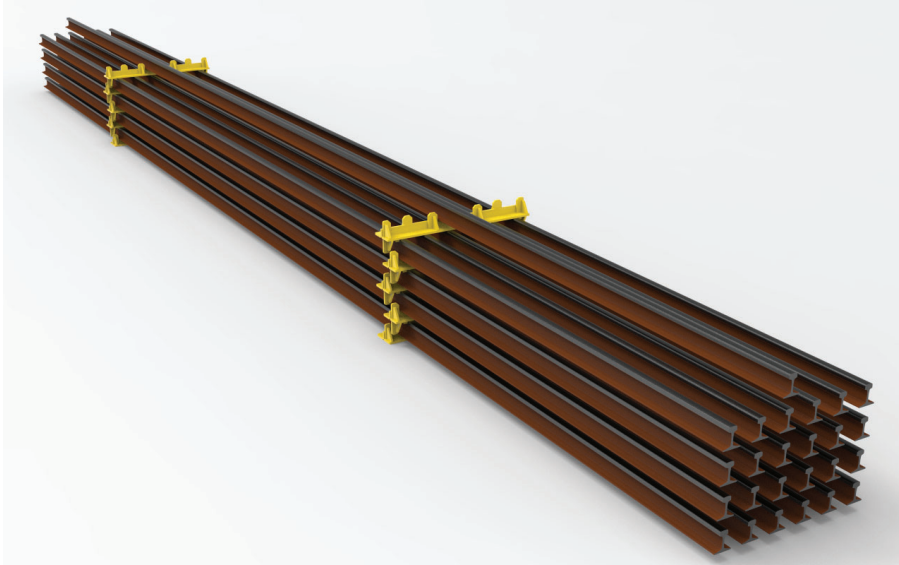


RSRII RAIL RACKS

Specification Document



Storage Racking System
for
Vignole and Bullhead Rails

Issue I

August 2022

Contents

Introduction	3
Key Features	4
Specifications	6
Contact Details	7

Issue Record

First Issue

August 2022

Introduction

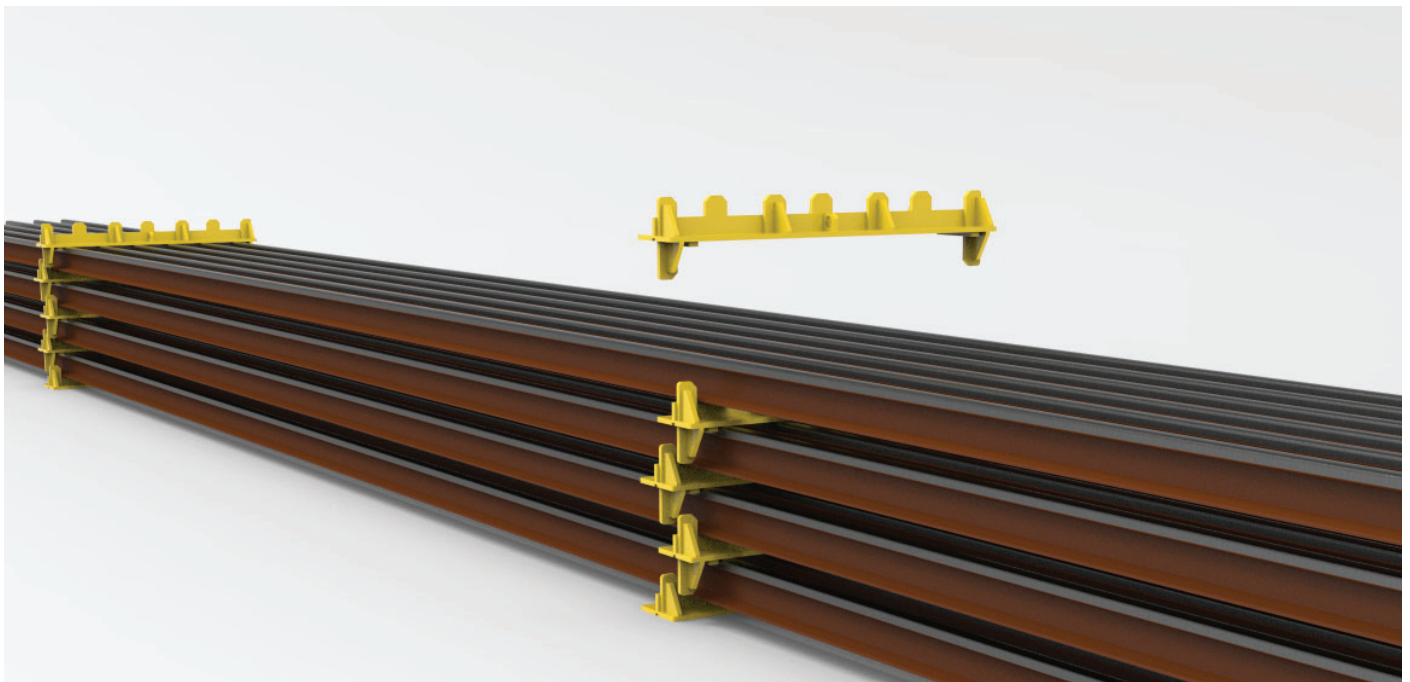
RSR11 Rail racks from Thomson Engineering Design provide a simple and safe solution to storing rails in stock yards and depots.

Two types of racks are provided - base racks which form the base of the stack and layer racks which go between the layers each of which is available for either bullhead or flat bottomed (vignole) rails.

Different sizes of rack are available for 1 to 15 rails per layer.

Base racks can be bolted to a concrete foundation if required. Rails may be stacked up to 8 layers high provided that a suitable foundation is available.

Bullhead rails are stored upright and all rails have a gap between them to allow for grabbing by most types of rail handling device.

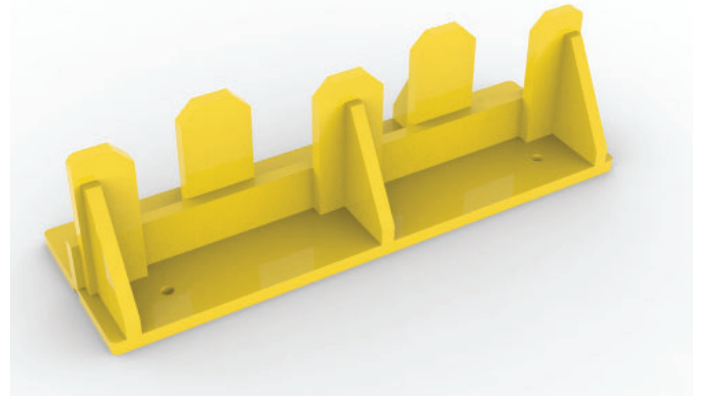


Key Features

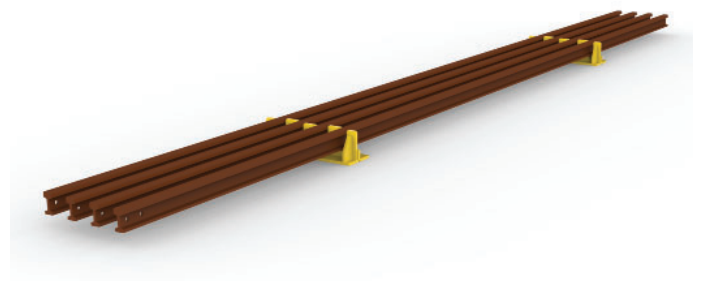
Base racks support the rail stack and can be bolted down for permanent installations.

Bullhead types hold the rails upright for easy attachment to rail grabs.

Base racks may be specified for 2 to 15 rails.

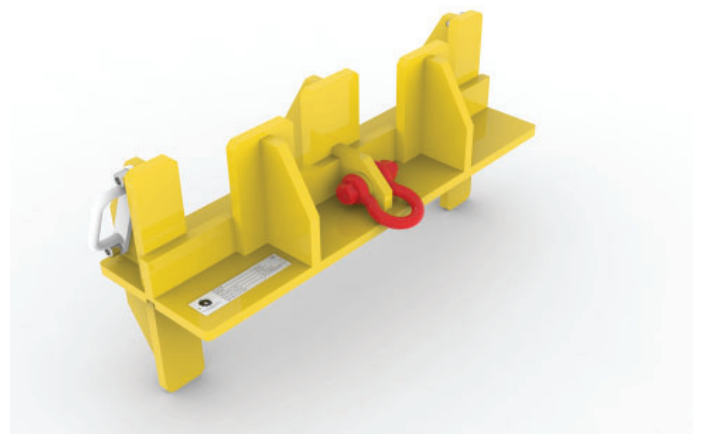


Base racks are placed at 9m intervals to support the rails. A minimum of two base racks are required.

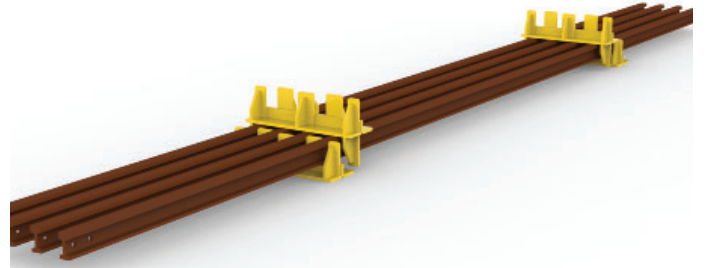


When the base rack layer has been filled with rails, layer racks are placed on top of the rails close to the base racks.

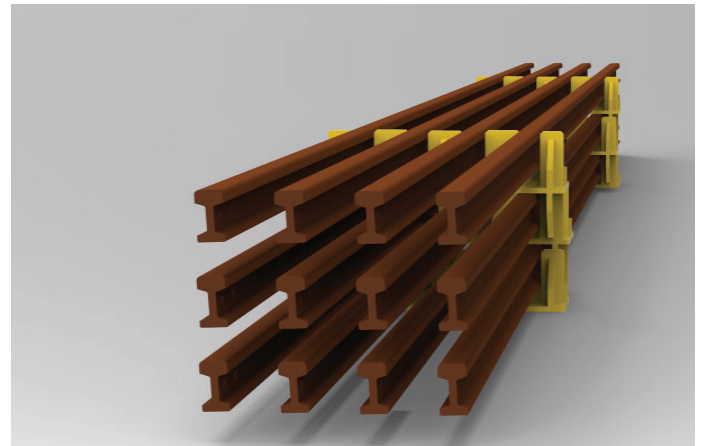
The layer racks support the next layer of rails.



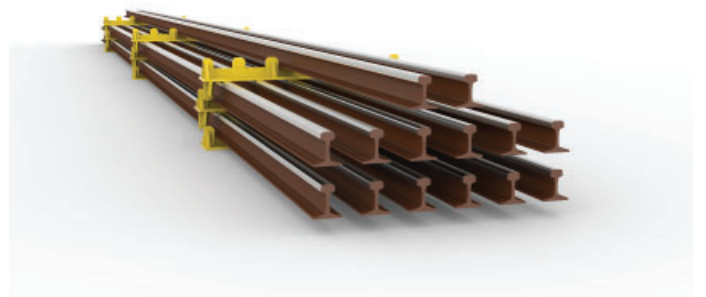
With the layer racks in place the stacking of rails can continue.



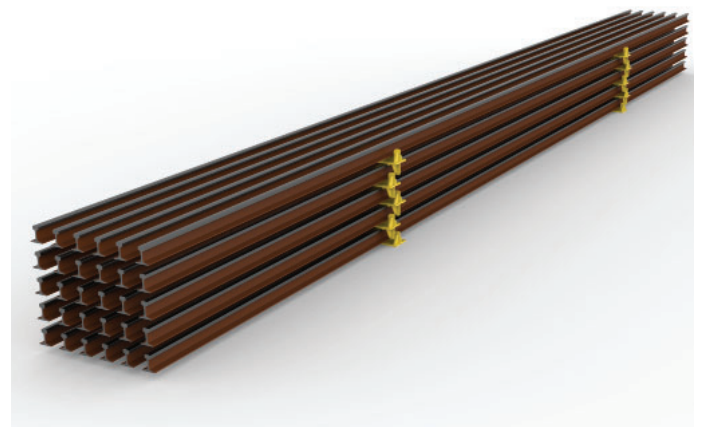
Add more layer racks to continue the stack. Providing the foundation is strong enough stacks may be made up to 8 layers high.



Flat bottom (vignole) rail racks operate in the same way as bullhead racks and, like bullhead racks, can be supplied for up to 15 rails per layer.



Safe, tidy and space efficient, Thomson rail racks are the ideal solution for stock yards and depots.



Specifications

Bullhead Rack Rail Gap Width	75 mm
Bullhead Rack Rail Gap Depth	140 mm
Bullhead Rack Rail Separator Width	120 mm
Vignole Rail Gap Width	155 mm
Vignole Rail Gap Depth	80 mm
Vignole Rail Separator Width	100 mm
Recommended Max. Stack Height (subject to foundations) (2 to 5 rails per layer)	5 layers
Recommended Max. Stack Height (subject to foundations) (6 to 15 rails per layer)	8 layers

Contact Details

A *ll technical and sales enquiries should be directed to Thomson Engineering Design.*

**Thomson Engineering Design Ltd
Units 2a & 3 Crabtree Road
Cinderford
Gloucestershire
UK
GL14 2YN**

Tel: +44 (0) 1594 82 66 11

Email: **sales@thomsondesignuk.com
 technical@thomsondesignuk.com**

PLEASE NOTE

Whilst every care is taken to ensure that the contents of this document are true and accurate, the specifications of our products and the scope of our services are constantly changing as part of our policy of continuous improvement.

We strongly recommend contacting the factory to ensure that details given are still current.

More than half our business comes from special products designed and built as one-off's and we are always pleased to discuss amended specifications should the product detailed here not meet your exact requirements.

